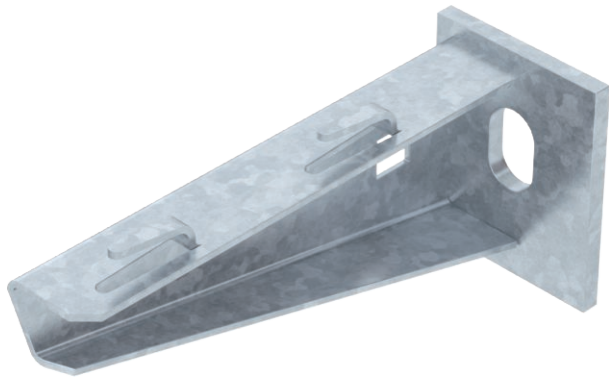


# Technical data sheet

## Wall and support bracket AWG 15

Item no. 6420606



Light-duty wall and support bracket with welded head plate for screwless mesh cable tray fastening.



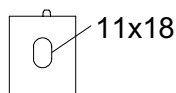
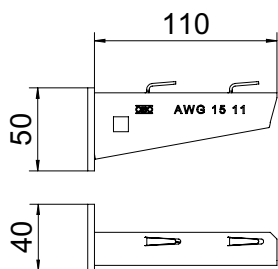
<b>St</b>	Steel
<b>FT</b>	Hot-dip galvanised

Additional product text, instruction  
Fastening of the bracket to the U support of width 400 mm or greater using a hexagonal bolt through both sides of the support. Please insert suitable spacers.

### Master data

Item no.	6420606
Type	AW G 15 11 FT
Description 1	Wall and support bracket
Description 2	for mesh cable tray
Dimension	B110mm
Material	Steel
Material symbol	St
Surface	Hot-dip galvanised
Surface to DIN	DIN EN ISO 1461
Surface symbol	FT
Smallest sales unit (VG)	1,00 Piece
Weight	14,00 kg/100 pc.

### Technical data



Width	110,00 mm
Side height	50,00 mm
Dimension A	40,00 mm
Dimension B	110,00 mm
Dimension H	50,00 mm
Dimension L	110,00 mm
Hole diameter	11,00 mm
Dimension value	110 x 50
Version	Wall and support brackets
Version	Wall and support bracket
F in kN	1,50 kN
for width	100,00 - 100,00 mm
Suitable for maintaining electrical function	<input type="checkbox"/>
Rustproof steel, pickled	<input type="checkbox"/>

# Technical data sheet

Wall and support bracket AWG 15

Item no. 6420606



## Technical data

Angle range	90,00 - 90,00 °
-------------	-----------------

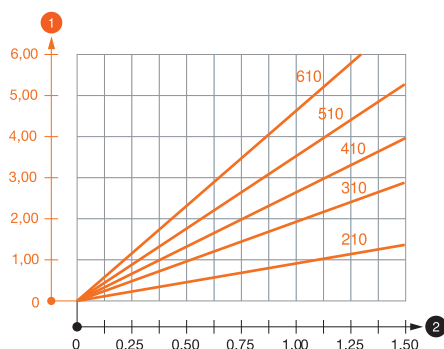
# Technical data sheet

## Wall and support bracket AWG 15

Item no. 6420606



### Load charts



Load values heading\_Characteristic anchor values  
Load values heading\_Bracket\_Support  
Footnote, load table

Characteristic anchor load values for wall and support bracket AWG 15

Load values for AWG 15 on support

Wall bracket load

Max. total load  $F$  = cable weight + cable tray + bracket. The load capacity values increase considerably when used in uncracked concrete. The values given are based on concrete of strength class C20/25. Observe the installation conditions of the DIBt approval (anchors).

Load diagram, bracket type AWG 15

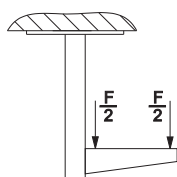
- 1 Bending of the bracket tip at permitted bracket load
- 2 Permitted bracket load in kN without man load
- Load curve with bracket lengths in mm

### Characteristic anchor load values for wall and support bracket AWG 15

Wall fastening		Max. load $F$ [kN]							
		Bracket width [mm]							
		110	160	210	310	410	510	560	610
Anchor type									
BZ-U 8-10-21/75		1,10	0,90	0,80	0,65	0,55	0,50	0,45	0,45
BZ-U 10-10-30/90		1,50	1,50	1,40	1,10	0,95	0,85	0,80	0,80

Max. total load  $F$  = cable weight + cable tray + bracket. The load capacity values increase considerably when used in uncracked concrete. The values given are based on concrete of strength class C20/25. Observe the installation conditions of the DIBt approval (anchors).

### Load values for AWG 15 on support



### Load values for AWG 15 on support

### Characteristic anchor load values for wall and support bracket AWG 15

T1	Wall fastening								
T2		Max. load $F$ [kN]							
T3		Bracket width [mm]							
T4	Anchor type	110	160	210	310	410	510	560	610
	BZ-U 8-10-21/75	1,1	0,9	0,8	0,65	0,55	0,5	0,45	0,45
	BZ-U 10-10-30/90	1,5	1,5	1,4	1,1	0,95	0,85	0,8	0,8