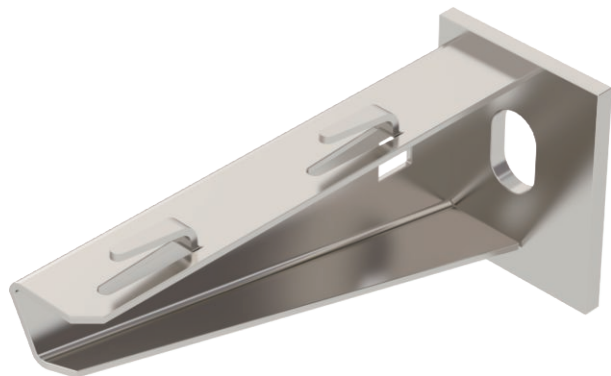


Technical data sheet

Wall and support bracket AWG 15

Item no. 6420625



Light-duty wall and support bracket with welded head plate for screwless mesh cable tray fastening.



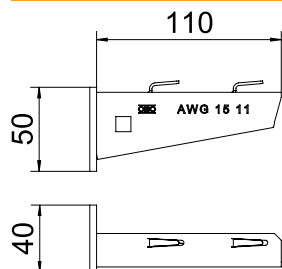
A2	Stainless steel, rustproof 1.4301
2B	Bright, reworked

Additional product text, instruction: Fastening of the bracket to the U support of width 400 mm or greater using a hexagonal bolt through both sides of the support. Please insert suitable spacers.

Master data

Item no.	6420625
Type	AWG 15 11 A2
Description 1	Wall and support bracket
Description 2	for mesh cable tray
Dimension	B110mm
Material	Stainless steel, material no. 1.4301
Material symbol	A2
Surface	Bright, reworked
Surface symbol	2B
Smallest sales unit (VG)	1,00 Piece
Weight	13,00 kg/100 pc.

Technical data



Width	110,00 mm
Side height	50,00 mm
Dimension A	40,00 mm
Dimension B	110,00 mm
Dimension H	50,00 mm
Dimension L	110,00 mm
Hole diameter	11,00 mm
Dimension value	110 x 50
Version	Wall and support brackets
Version	Wall and support bracket
F in kN	1,50 kN
for width	100,00 mm
Suitable for maintaining electrical function	<input type="checkbox"/>
Rustproof steel, pickled	<input checked="" type="checkbox"/>
Angle range	90,00 - 90,00 °

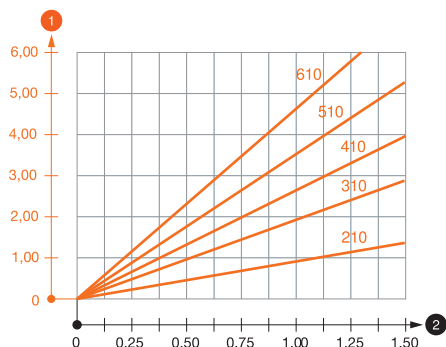
Technical data sheet

Wall and support bracket AWG 15

Item no. 6420625



Load charts



Load values heading_Characteristic anchor values
Heading, load table
Footnote, load table

Characteristic anchor load values for wall and support bracket AW G 15

Wall bracket load

Max. total load $F = \text{cable weight} + \text{cable tray} + \text{bracket}$. The load capacity values increase considerably when used in uncracked concrete. The values given are based on concrete of strength class C20/25. Observe the installation conditions of the DIBt approval (anchors).

Load diagram, bracket type AW G 15

1 Bending of the bracket tip at permitted bracket load

2 Permitted bracket load in kN without man load

— Load curve with bracket lengths in mm

Characteristic anchor load values for wall and support bracket AW G 15

Bracket load							
	Anchor	Max. total load F in kN					
	Permitted	Bracket length in mm					
	F kN	100	200	300	400	500	600
	3,57	1,09	0,90	0,73	0,65	0,61	0,55

Max. total load $F = \text{cable weight} + \text{cable tray} + \text{bracket}$. The load capacity values increase considerably when used in uncracked concrete. The values given are based on concrete of strength class C20/25. Observe the installation conditions of the DIBt approval (anchors).

Characteristic anchor load values for wall and support bracket AW G 15

T1	Bracket load						
T2	Anchor	Max. total load F in kN					
T3	Permitted	Bracket length in mm					
T4	F kN	100	200	300	400	500	600
	3,57	1,09	0,90	0,73	0,65	0,61	0,55