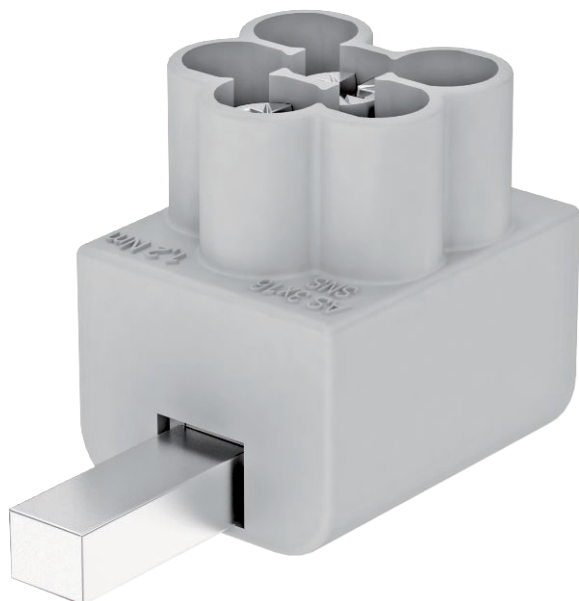


# Technical data sheet

## Connection terminal for through-wiring



Item no. 5012010



ERC

Connection terminal type: AS 3 x 16

Connection cross-section: 3 x 1.5 - 16 mm<sup>2</sup> rigid/ multiple strands  
3 x 1.5 - 10 mm<sup>2</sup> fine-wire/with wire end sleeve

Stripping length: 16 mm

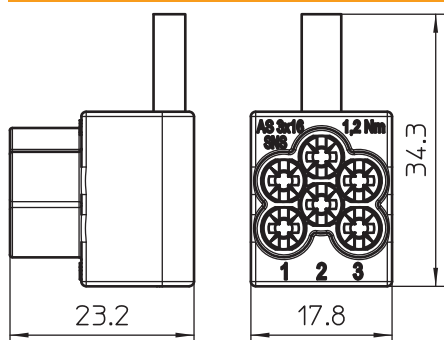
Rec. tightening torque: 1.2 Nm

Nominal current: 50 A

Width: 17.5 mm (1 PU)

For EMC-optimised V through-wiring to IEC 60364-5-53 (VDE 0100-534).

### Dimensions



### Master data

Item no.	5012010
Type	AS 3x16
Description 1	Connection terminal
Description 2	3x16mm <sup>2</sup>
Dimension	16mm <sup>2</sup>
Colour	Light grey
RAL number	7035
Smallest sales unit (VG)	5,00 Piece

# Technical data sheet

## Connection terminal for through-wiring

Item no. 5012010



### Master data

Weight	2,47 kg/100 pc.
--------	-----------------

### Technical data

Rated current	50,00 A
Maximum back-up fuse	50,00 A
Pole number	3,00
Version	3 x 16 mm <sup>2</sup>
Division unit TE (17.5 mm)	1
Connection cross-section, flexible	1,50 - 10,00 mm <sup>2</sup>
Connection cross-section, rigid	1,50 - 16,00 mm <sup>2</sup>
Connection cross-section, multi-wire	1,50 - 16,00 mm <sup>2</sup>