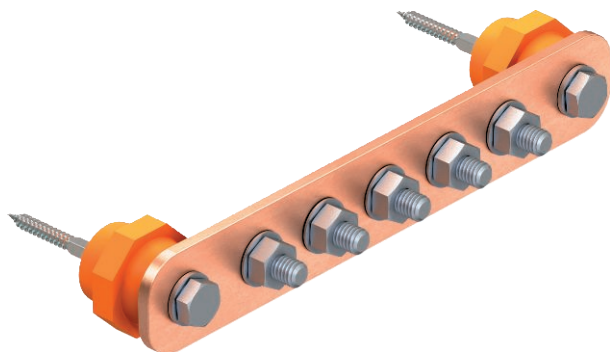


Technical data sheet

Equipotential busbar BigBar for industrial applications

Item no. 5015836



Main equipotential busbar to VDE 0100 Part 410 and Part -540, and also lightning protection equipotential bonding to VDE 0185-305 (IEC 62305)

- Insulation feet
- Quick, simple mounting of connection cables using lock bolts M10
- Complete with anchors and bolts for wall mounting
- With lock washer (DIN 137) for bolt locking against loosening (e.g. required in industry and explosion-protected areas)

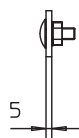
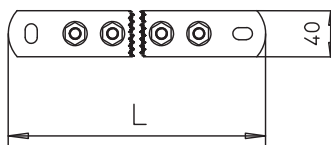


Cu Copper

Master data

Item no.	5015836
Type	1802 8 CU
Description 1	Equipotential busbar
Description 2	BigBar / 8 connections
Dimension	8xM10
Material	Copper
Material symbol	Cu
Smallest sales unit (VG)	1,00 Piece
Weight	116,55 kg/100 pc.

Technical data



Length	343,50 mm
Width	40,00 mm
Height	5,00 mm
Number of connections	8,00
Quantity of round conductor connections, total	8,00
Quantity of round conductor connections 8 mm	0,00
Quantity of round conductor connections 10 mm	0,00
Quantity of round conductor connections 8-10 mm	0,00
Quantity of flat conductor connections up to 30 mm	0,00
Quantity of flat conductor connections up to 40 mm	0,00
Quantity of cable connections up to 6 mm ² , rigid	0,00
Quantity of cable connections up to 16 mm ² , rigid	0,00
Quantity of cable connections up to 25 mm ² , rigid	0,00

Technical data sheet

Equipotential busbar BigBar for industrial applications

Item no. 5015836



Technical data

Quantity of cable connections up to 95 mm ² , rigid	0,00
Version	Only terminal
Shape	Fixed structure
Lightning current carrying capacity	H/100 kA
Insulator	<input checked="" type="checkbox"/>
Material of the terminal	Copper
Material of the contact rail	Copper