

Technical data sheet

TP wall and ceiling bracket

Item no. 6365991



TP wall and ceiling bracket with clamping lugs for screwless mesh cable tray fastening.



A2 Stainless steel, rustproof 1.4301
2B Bright, reworked

Additional product text, instruction
If the bracket is fastened directly to the wall or ceiling, then, for reasons of stability, always use the spacer, type DS 4.
Max. side height of the cable support system 60 mm.

Master data

Item no.	6365991
Type	TPDG 195 A2
Description 1	Wall and ceiling strap
Description 2	for mesh cable tray
Dimension	B195mm
Material	Stainless steel, material no. 1.4301
Material symbol	A2
Surface	Bright, reworked
Surface symbol	2B
Smallest sales unit (VG)	6,00 Piece
Weight	60,00 kg/100 pc.

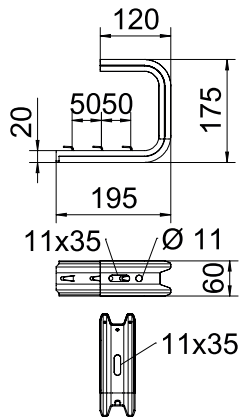
Technical data sheet

TP wall and ceiling bracket

Item no. 6365991



Technical data



Width	195,00 mm
Dimension B	195,00 mm
Dimension H	175,00 mm
Version	Suspension bracket (C clamp)
F in ceiling	0,95 kN
F in kN wall for width	1,05 kN
Suitable for tray/ladder width	150,00 - 150,00 mm
Suitable for maintaining electrical function	<input type="checkbox"/>
Suitable for cable tray	<input type="checkbox"/>
Suitable for cable ladder	<input type="checkbox"/>
Suitable for mesh cable tray	<input checked="" type="checkbox"/>

Appr. load:

Anchor, approved F 1.65	1,65 kN
Anchor, approved F 3.57	3,57 kN

Technical data sheet

TP wall and ceiling bracket

Item no. 6365991



Technical data

Appr. load:

Technical data sheet

TP wall and ceiling bracket

Item no. 6365991



Technical data

Appr. load: