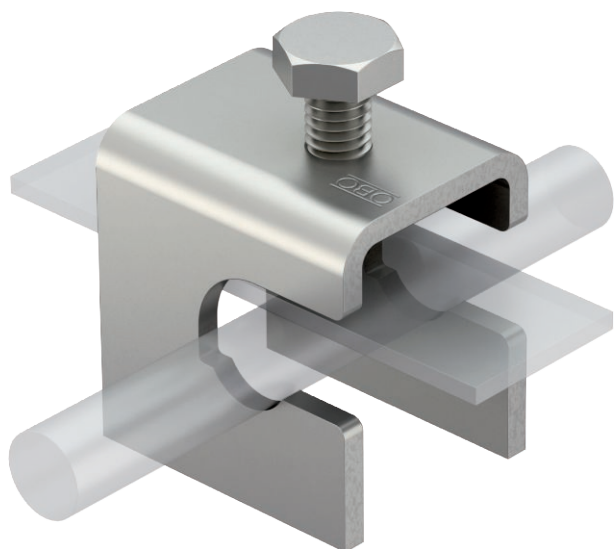


# Technical data sheet

## VARIO earthing terminal for reinforced steels

Item no. 5014476



- For reinforced steels with diameters 8-14 mm and FL 30 x 5
- Simple mounting through open slot
- Side suspension possible



St Steel

### Product description

### Master data

Item no.	5014476
Type	1814 ST
Description 1	Variable earthing terminal
Description 2	for reinforcement
Dimension	50x40x70
Material	Steel
Material symbol	St
Weight	20,00 kg/100 pc.

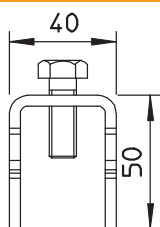
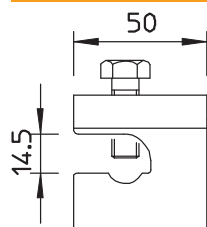
# Technical data sheet

## VARIO earthing terminal for reinforced steels

Item no. 5014476



### Technical data



Type of fastening screw	Hex set screw
Type of connector	Connector
Lightning current carrying capacity	N/50 kA
Suitable for connection	Other
Short-circuit current (50 Hz)(1 s; ≤300°C)	7,30 kA
Fit	FL30x5 x Rd8-14 mm