

Technical data sheet

TP wall and ceiling bracket

Item no. 6363861



TP wall and ceiling bracket for universal use.



| | |
|-----------|--------------------|
| St | Steel |
| FT | Hot-dip galvanised |

| | |
|--------------------------------------|---------------------------------------------------------------------------------------------------------------------------------------------------------------------------------------------------------|
| Additional product text, instruction | Important! If the ceiling bracket is fastened directly to the wall or ceiling, then, for reasons of stability, always use the spacer, type DS 4. Max. side height of the cable support system 60 mm. |
|--------------------------------------|---------------------------------------------------------------------------------------------------------------------------------------------------------------------------------------------------------|

Master data

| | |
|--------------------------|------------------------|
| Item no. | 6363861 |
| Type | TPD 145 FT |
| Description 1 | Wall and ceiling strap |
| Description 2 | TP profile |
| Dimension | B145mm |
| Material | Steel |
| Material symbol | St |
| Surface | Hot-dip galvanised |
| Surface to DIN | DIN EN ISO 1461 |
| Surface symbol | FT |
| Smallest sales unit (VG) | 1,00 Piece |
| Weight | 54,00 kg/100 pc. |

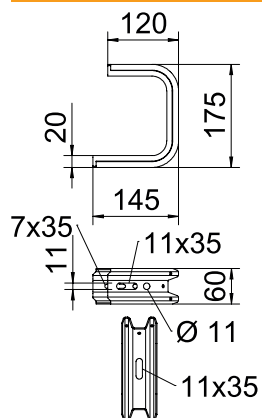
Technical data sheet

TP wall and ceiling bracket

Item no. 6363861



Technical data



| | |
|----------------------------------------------|-------------------------------------|
| Length | 145,00 mm |
| Width | 145,00 mm |
| Dimension B | 145,00 mm |
| Dimension H | 175,00 mm |
| Version | Suspension bracket (C clamp) |
| F in ceiling | 1,30 kN |
| F in kN wall | 1,40 kN |
| for width | 100,00 - 100,00 mm |
| Suitable for tray/ladder width | 100,00 mm |
| Suitable for maintaining electrical function | <input type="checkbox"/> |
| Suitable for cable tray | <input checked="" type="checkbox"/> |
| Suitable for cable ladder | <input checked="" type="checkbox"/> |
| Suitable for mesh cable tray | <input checked="" type="checkbox"/> |

Appr. load:

| | |
|-------------------------|---------|
| Anchor, approved F 1.65 | 1,65 kN |
| Anchor, approved F 3.57 | 3,57 kN |

Technical data sheet

TP wall and ceiling bracket

Item no. 6363861



Technical data

Appr. load:

Technical data sheet

TP wall and ceiling bracket

Item no. 6363861



Technical data

Appr. load: