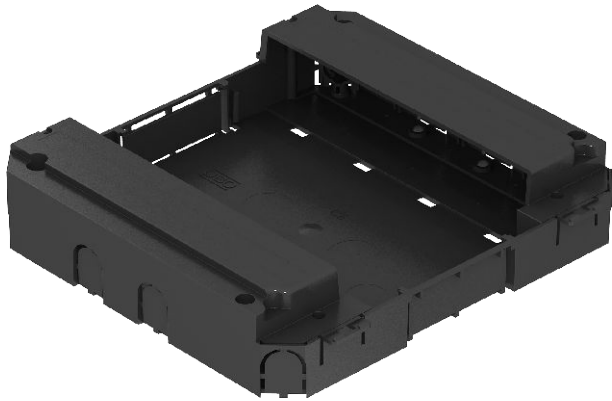


Technical data sheet

Module support for vertical installation Modul 45® devices

Item no. 7408698



Module support for the installation of to eight Modul 45 devices in an empty standard service unit or an empty height-adjustable cassette of nominal size 9 or R9. The module support is locked into the locking ladder.

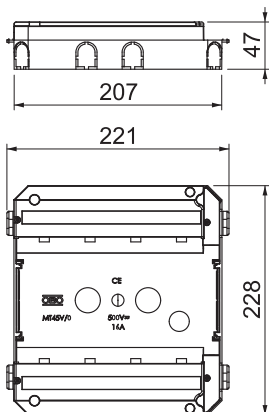


PA Polyamide

Master data

Item no.	7408698
Type	MT45V 0
Description 1	Module support
Description 2	for system height 55 mm
Colour	Graphite black
RAL number	9011
Material	Polyamide
Material symbol	PA
Smallest sales unit (VG)	1,00 Piece
Weight	29,00 kg/100 pc.

Technical data



Floor plate	<input type="checkbox"/>
Seal installation option	<input type="checkbox"/>
Suitable for underfloor ducts	<input checked="" type="checkbox"/>
Suitable for cavity floor installation	<input checked="" type="checkbox"/>
Suitable for raised floor installation	<input checked="" type="checkbox"/>
Suitable for screed-flush closed underfloor ducts	<input checked="" type="checkbox"/>
Suitable for screed-covered underfloor ducts	<input checked="" type="checkbox"/>
Accessory mounting type	Lock
Strain relief option	<input checked="" type="checkbox"/>