

# Technical data sheet

## Black powder-coated steel bend, without thread

Item no. 2046828



90° bend with moulded sleeves, for electrical installation pipes according to EN 61386-1. With burr-free inner wall.



<b>St</b>	Steel
<b>PE50</b>	PES50 – Polyester/epoxy

### Master data

Item no.	2046828
Type	SBN40 SW
Description 1	Conduit plug-in bend
Description 2	without thread
Dimension	ø40mm
Colour	Jet black
RAL number	9005
Material	Steel
Material symbol	St
Surface	PES50 – Polyester/epoxy
Surface to DIN	DIN EN 12329
Surface symbol	PE50
Smallest sales unit (VG)	15,00 Piece
Weight	68,90 kg/100 pc.

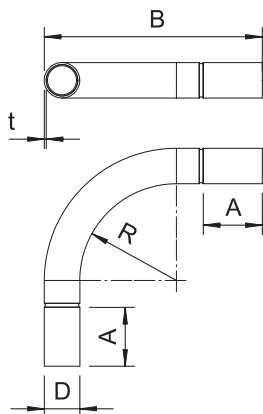
# Technical data sheet

## Black powder-coated steel bend, without thread

Item no. 2046828



### Technical data



Dimension A	87,20 mm
Dimension B	279,00 mm
Dimension D	40,70 mm
Dimension M	M40
Dimension R	170,00 mm
Dimension t	1,50 mm
Dimension l	50,00 mm
Version	Connector
Size	40
For nominal pipe diameter	40,00 mm
Flexible	<input type="checkbox"/>
Halogen-free	<input type="checkbox"/>
With inspection opening and lid	<input type="checkbox"/>
With sleeve	<input checked="" type="checkbox"/>
Polished surface	<input type="checkbox"/>
Brushed surface	<input type="checkbox"/>
Angle of the bend	90,00 °
Two-part	<input type="checkbox"/>