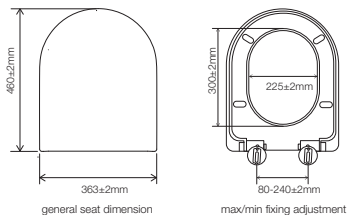


INSTALLATION MANUAL

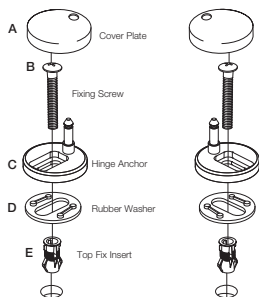
FITTING INSTRUCTIONS

Please read carefully before attempting to fit the seat & refer to the 'does it fit' diagram below to ensure it's suitable for your toilet.
Please make sure the warnings and after-care instructions are made available for the end user to read.

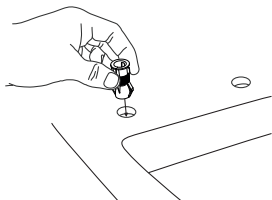
Does it fit?



Installation Parts

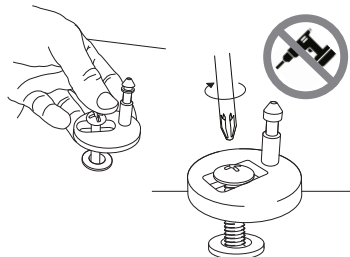


- 1 Push top fix inserts into toilet pan holes

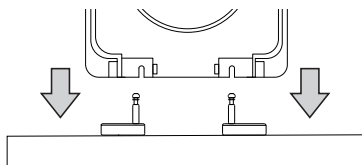


If difficult to push in, lubricate the rubber insert with water.

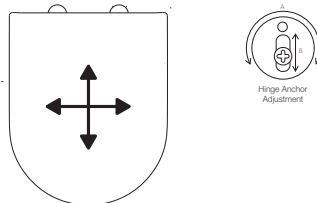
- 2 Insert the screw through the anchor and tighten up with a screwdriver until the anchor is loosely secured to allow for further adjustment.



- 3 Click the seat on

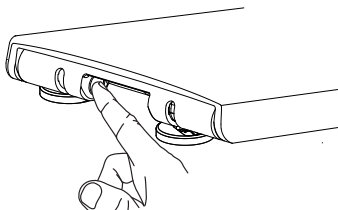


- 4 Adjust seat to correct position

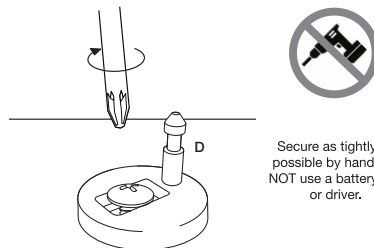


Adjust the position of the hinge anchors to make sure the seat lines up with the edges of the toilet pan.

- 5 Press the quick release button and remove the toilet seat



- 6 Fully tighten hinge anchors



Secure as tightly as possible by hand. Do NOT use a battery drill or driver.

- 7 Place on cover caps and click seat into place.

