

## SCREW FITTING

Brass fittings for plumbing installations where the connection is made through threading.

- European brass of DW quality (4MS) approved for utilization in potable water applications.
- Batch number marked on the body.
- ISO 228 threads.
- Knurling thread for better sealing attachment.



<sup>1)</sup> Ni-free only applies to brass colour fittings

## TECHNICAL SHEET SCREW FITTING

### PRODUCT DESCRIPTION

Screw fitting for connecting pipes, valves and other accessories, by using sealing materials or washers to achieve the leak tightness.

### PRODUCT SCOPE

Primarily, threaded brass fittings are recommended for installations of:

- Drinking water and sanitary hot water.
- Water distribution network.
- Heating and air-conditioning systems.
- Compressed air.

### GENERAL DIMENSIONS

#### HEXAGONAL NIPPLE MALE-MALE

Code	Mesure	PN (bar)	Temp. (°C) *
834003	1/4	16	0 to 120
834005	3/8	16	0 to 120
834010	1/2 L25	16	0 to 120
834020	3/4 L27	16	0 to 120
834030	1	16	0 to 120
834040	1 1/4	16	0 to 120
834050	1 1/2	16	0 to 120
834060	2	16	0 to 120

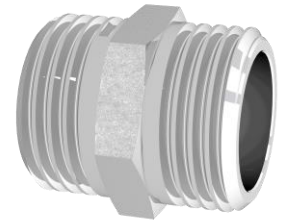
\* Excluding freezing





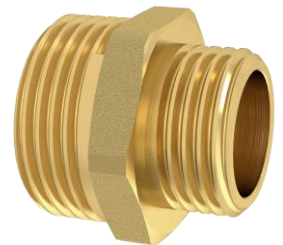
**REDUCING HEXAGONAL NIPPLE MALE-MALE CHROME PLATED**

Code	Mesure	PN (bar)	Temp. (°C)*
834105	3/8	16	0 to 120
834110	1/2 L25	16	0 to 120
834120	3/4 L27	16	0 to 120



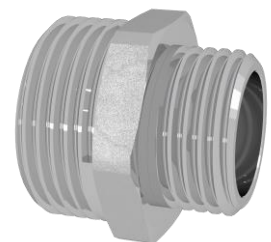
**REDUCING HEXAGONAL NIPPLE MALE-MALE**

Code	Mesure	PN (bar)	Temp. (°C)*
834503	1/4-3/8	16	0 to 120
834505	1/4-1/2	16	0 to 120
834510	3/8-1/2	16	0 to 120
834515	3/8-3/4	16	0 to 120
834520	1/2-3/4	16	0 to 120
834530	1/2-1	16	0 to 120
834535	3/4-1	16	0 to 120
834540	3/4-1 1/4	16	0 to 120
834545	1-1 1/4	16	0 to 120
834550	1-1 1/2	16	0 to 120
834555	1 1/4-1 1/2	16	0 to 120
834560	1 1/4-2	16	0 to 120
834565	1 1/2-2	16	0 to 120



**REDUCING NIPPLE MALE-MALE CHROME PLATED**

Code	Mesure	PN (bar)	Temp. (°C)*
834610	3/8-1/2	16	0 to 120
834620	1/2-3/4	16	0 to 120



\* Excluding freezing


**SOCKET FEMALE-FEMALE**

Code	Mesure	PN (bar)	Temp. (°C)*
832003	3/8	16	0 to 120
832010	1/2	16	0 to 120
832020	3/4	16	0 to 120
832030	1	16	0 to 120
832040	1 1/4	16	0 to 120
832050	1 1/2	16	0 to 120
832060	2	16	0 to 120


**SOCKET FEMALE-FEMALE CHROME PLATED**

Code	Mesure	PN (bar)	Temp. (°C)*
832110	1/2	16	0 to 120


**REDUCING SOCKET FEMALE-FEMALE**

Code	Mesure	PN (bar)	Temp. (°C)*
832503	1/4-3/8	16	0 to 120
832504	1/4-1/2	16	0 to 120
832505	3/8-1/2	16	0 to 120
832507	1/4-3/4	16	0 to 120
832508	3/8-3/4	16	0 to 120
832510	1/2-3/4	16	0 to 120
832520	1/2-1	16	0 to 120
832525	3/4-1	16	0 to 120
832540	3/4-1 1/4	16	0 to 120
832545	1-1 1/4	16	0 to 120
832555	1 1/4-1 1/2	16	0 to 120
832570	1 1/2-2	16	0 to 120



\* Excluding freezing

**REDUCING SOCKET FEMALE-FEMALE CHROME PLATED**

Code	Mesure	PN (bar)	Temp. (°C)*
832605	3/8-1/2	16	0 to 120
832610	1/2-3/4	16	0 to 120

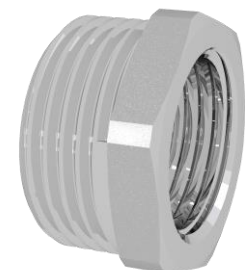



**REDUCING HEXAGONAL BUSH MALE-FEMALE**

Code	Mesure	PN (bar)	Temp. (°C)*
833000	1/4M-1/8H	16	0 to 120
833003	3/8M-1/8H	16	0 to 120
833001	3/8M-1/4H	16	0 to 120
833004	1/2M-1/8H	16	0 to 120
833002	1/2M-1/4H	16	0 to 120
833005	1/2M-3/8H	16	0 to 120
833008	3/4M-3/8H	16	0 to 120
833010	3/4M-1/2H	16	0 to 120
833028	1M-3/8H	16	0 to 120
833020	1M-1/2H	16	0 to 120
833030	1M-3/4H	16	0 to 120
833035	1 1/4M-1/2H	16	0 to 120
833040	1 1/4M-3/4H	16	0 to 120
833045	1 1/4M-1H	16	0 to 120
833050	1 1/2M-1H	16	0 to 120
833055	1 1/2M-1 1/4H	16	0 to 120
833065	2M-1 1/4H	16	0 to 120
833067	2M-1 1/2H	16	0 to 120


**REDUCING HEXAGONAL BUSH MALE-FEMALE CHROME PLATED**

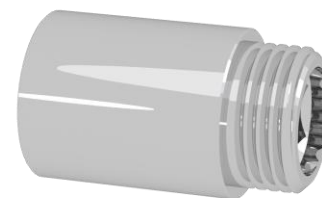
Code	Mesure	PN (bar)	Temp. (°C)*
833105	1/2M-3/8H	16	0 to 120
833110	3/4M-1/2H	16	0 to 120
833130	1M-3/4H	16	0 to 120



\* Excluding freezing


**EXTENSION MALE-FEMALE CHROME PLATED**

Code	Mesure	PN (bar)	Temp. (°C)*
830610	1/2 L10	16	0 to 120
830615	1/2 L15	16	0 to 120
830620	1/2 L20	16	0 to 120
830625	1/2 L25	16	0 to 120
830630	1/2 L30	16	0 to 120
830640	1/2 L40	16	0 to 120
830650	1/2 L50	16	0 to 120
830660	1/2 L60	16	0 to 120
830680	1/2 L80	16	0 to 120
830699	1/2 L100	16	0 to 120


**EXTENSION MALE-FEMALE**

Code	Mesure	PN (bar)	Temp. (°C)*
830710	1/2 L10	16	0 to 120
830715	1/2 L15	16	0 to 120
830720	1/2 L20	16	0 to 120
830725	1/2 L25	16	0 to 120
830730	1/2 L30	16	0 to 120
830740	1/2 L40	16	0 to 120
830750	1/2 L50	16	0 to 120
830760	1/2 L60	16	0 to 120
830780	1/2 L80	16	0 to 120
830799	1/2 L100	16	0 to 120



\* Excluding freezing


**REDUCING SOCKET MALE-FEMALE**

Code	Mesure	PN (bar)	Temp. (°C)*
833510	1/2H-3/8M	16	0 to 120
833522	3/4H-3/8M	16	0 to 120
833525	3/4H-1/2M	16	0 to 120
833530	1H-1/2M	16	0 to 120
833535	1H-3/4M	16	0 to 120
833540	1 1/4H-3/4M	16	0 to 120
833545	1 1/4H-1M	16	0 to 120
833550	1 1/2H-1M	16	0 to 120
833555	1 1/2H-1 1/4M	16	0 to 120
833560	2H-1 1/4M	16	0 to 120
833565	2H-1 1/2M	16	0 to 120


**REDUCING SOCKET MALE-FEMALE CHROME PLATED**

Code	Mesure	PN (bar)	Temp. (°C)*
833610	1/2H-3/8M	16	0 to 120
833625	1/H-3/4M	16	0 to 120


**HEXAGONAL BUSH FEMALE-MALE**

Code	Mesure	PN (bar)	Temp. (°C)*
831504	1/4	16	0 to 120
831505	3/8	16	0 to 120
831510	1/2	16	0 to 120
831520	3/4	16	0 to 120
831530	1	16	0 to 120
831540	1 1/4	16	0 to 120
831550	1 1/2	16	0 to 120
831555	2	16	0 to 120



\* Excluding freezing


**HEXAGONAL BUSH FEMALE-MALE CHROME PLATED**

Code	Mesure	PN (bar)	Temp. (°C)*
831605	3/8	16	0 to 120
831610	1/2	16	0 to 120


**REDUCING SOCKET MALE-FEMALE INNER HEXAGON**

Code	Mesure	PN (bar)	Temp. (°C)*
839510	1/2M-3/8H	16	0 to 120
839525	3/4M-1/2H	16	0 to 120
839530	1M-3/4H	16	0 to 120
839535	1 1/4M-1H	16	0 to 120


**REDUCING SOCKET MALE-FEMALE INNER HEXAGON CHROME PLATED**

Code	Mesure	PN (bar)	Temp. (°C)*
839610	1/2M-3/8H	16	0 to 120
839625	3/4M-1/2H	16	0 to 120


**ELBOW FEMALLE-FEMALLE**

Code	Mesure	PN (bar)	Temp. (°C)*
835003	1/4	16	0 to 120
835005	3/8	16	0 to 120
835010	1/2	16	0 to 120
835020	3/4	16	0 to 120
835030	1	16	0 to 120
835040	1 1/4	16	0 to 120
835050	1 1/2	16	0 to 120
835060	2	16	0 to 120


**ELBOW FEMALLE-FEMALLE CHROME PLATED**

Code	Mesure	PN (bar)	Temp. (°C)*
835110	1/2	16	0 to 120
835120	3/4	16	0 to 120



\* Excluding freezing


**ELBOW MALE-FEMALE**

Code	Mesure	PN (bar)	Temp. (°C)*
836000	1/8	16	0 to 120
836003	1/4	16	0 to 120
836005	3/8	16	0 to 120
836010	1/2	16	0 to 120
836020	3/4	16	0 to 120
836030	1	16	0 to 120
836040	1 1/4	16	0 to 120
836050	1 1/2	16	0 to 120
836060	2	16	0 to 120


**ELBOW MALE-FEMALE CHROME PLATED**

Code	Mesure	PN (bar)	Temp. (°C)*
836110	1/2	16	0 to 120


**ELBOW MALE-MALE**

Code	Mesure	PN (bar)	Temp. (°C)*
835505	3/8	16	0 to 120
835510	1/2	16	0 to 120
835520	3/4	16	0 to 120
835530	1	16	0 to 120
835540	1 1/4	16	0 to 120
835550	1 1/2	16	0 to 120
835560	2	16	0 to 120


**ELBOW MALE-MALE CHROME PLATED**

Code	Mesure	PN (bar)	Temp. (°C)*
835620	3/4	16	0 to 120



\* Excluding freezing


**EQUAL TEE FEMALE-FEMALE-FEMALE**

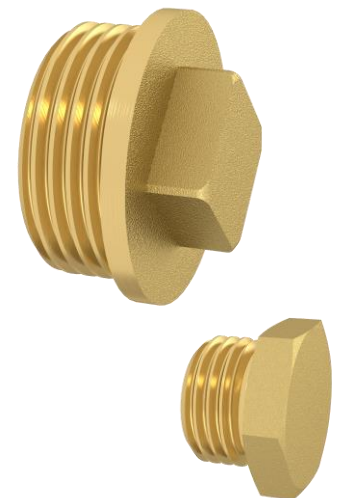
Code	Mesure	PN (bar)	Temp. (°C)*
830505	3/8	16	0 to 120
830510	1/2	16	0 to 120
830520	3/4	16	0 to 120
830530	1	16	0 to 120
830540	1 1/4	16	0 to 120
830550	1 1/2	16	0 to 120
830560	2	16	0 to 120


**EQUAL TEE MALE-MALE-MALE**

Code	Mesure	PN (bar)	Temp. (°C)*
830305	3/8	16	0 to 120
830310	1/2	16	0 to 120
830320	3/4	16	0 to 120
830330	1	16	0 to 120
830340	1 1/4	16	0 to 120


**MALE CAP**

Code	Mesure	PN (bar)	Temp. (°C)*
830203(*)	1/4	16	0 to 120
830205	3/8	16	0 to 120
830210	1/2	16	0 to 120
830220	3/4	16	0 to 120
830230	1	16	0 to 120
830240	1 1/4	16	0 to 120
830250	1 1/2	16	0 to 120
830260	2	16	0 to 120



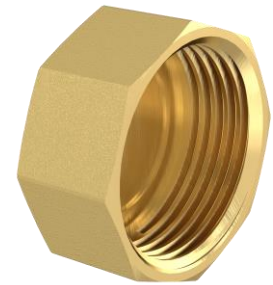
(\*)830203

\* Excluding freezing



**FEMALE CAP**

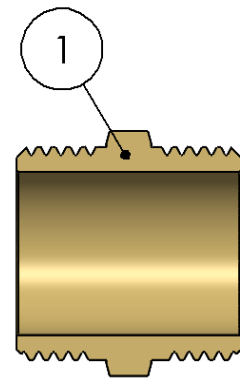
Code	Mesure	PN (bar)	Temp. (°C)*
830000	1/4	16	0 to 120
830005	3/8	16	0 to 120
830010	1/2	16	0 to 120
830020	3/4	16	0 to 120
830030	1	16	0 to 120
830040	1 1/4	16	0 to 120
830050	1 1/2	16	0 to 120
830060	2	16	0 to 120



\* Excluding freezing

**MATERIAL**

Item	Component	Material	Finishing
1	Body	CW617N Brass	Brass Colour*



\* Variable components according to model.

**Compatibility with fluids**

Fluid	Compatibility
Drinking water and domestic hot water	Excelent

For any other fluid, please contact Arco technical Service

**INSTALLATION INSTRUCTIONS**

Before carrying out any action, the water supply to the installation must be cut off. Make sure that there is no dirt or foreign matter in the connection to the mains. Apply the appropriate sealing material to the threads. Installation must be carried out with a suitable tool, preferably with a wrench to hold the accessory.

Restore the water supply and check the tightness of all connections before putting the installation into service.



All products have an enviromental impact during its life cycle, even once retired. All the components of this product can be recycled. Once the use is over, leave the valve in any recycling green point. Válvulas Arco reserves the right to change the product or any of its technical specifications without prior notice.

FT80010ING – Edition 2024-12