



SCREW FITTING

Brass fittings for plumbing installations where the connection is made through threading.

- European brass of DW quality (4MS) approved for utilization in potable water applications.
- Batch number marked on the body.
- ISO 228-1 and Gas Whitworth B.S.P Din 259 threads
- Knurling thread for better sealing attachment.



¹⁾ Ni-free only applies to brass colour fittings

TECHNICAL SHEET SCREW FITTING

PRODUCT DESCRIPTION

Screw fitting for connecting pipes, valves and other accessories, by using sealing materials or washers to achieve the leak tightness.

PRODUCT SCOPE

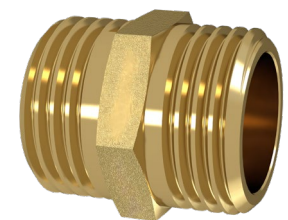
Primarily, threaded brass fittings are recommended for installations of:

- Drinking water and sanitary hot water.
- Water distribution network.
- Heating and air-conditioning systems.
- Compressed air.

GENERAL DIMENSIONS

HEXAGONAL NIPPLE MALE-MALE

Code	Mesure	PN (bar)	Temp. (°C) *
834003	1/4	16	0 to 95
834005	3/8	16	0 to 95
834010	1/2 L25	16	0 to 95
834020	3/4 L27	16	0 to 95
834030	1	16	0 to 95
834040	1 1/4	16	0 to 95
834050	1 1/2	16	0 to 95
834060	2	16	0 to 95

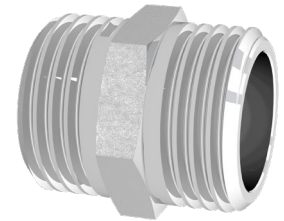


* Excluding freezing



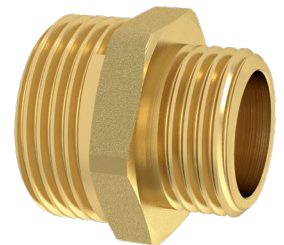
REDUCING HEXAGONAL NIPPLE MALE-MALE CHROME PLATED

Code	Mesure	PN (bar)	Temp. (°C)*
834105	3/8	16	0 to 95
834110	1/2 L25	16	0 to 95
834120	3/4 L27	16	0 to 95



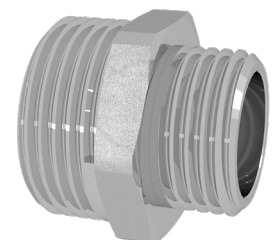
REDUCING HEXAGONAL NIPPLE MALE-MALE

Code	Mesure	PN (bar)	Temp. (°C)*
834503	1/4-3/8	16	0 to 95
834505	1/4-1/2	16	0 to 95
834510	3/8-1/2	16	0 to 95
834515	3/8-3/4	16	0 to 95
834520	1/2-3/4	16	0 to 95
834530	1/2-1	16	0 to 95
834535	3/4-1	16	0 to 95
834540	3/4-1 1/4	16	0 to 95
834545	1-1 1/4	16	0 to 95
834550	1-1 1/2	16	0 to 95
834555	1 1/4-1 1/2	16	0 to 95
834560	1 1/4-2	16	0 to 95
834565	1 1/2-2	16	0 to 95



REDUCING NIPPLE MALE-MALE CHROME PLATED

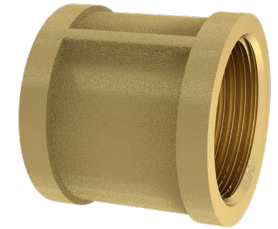
Code	Mesure	PN (bar)	Temp. (°C)*
834610	3/8-1/2	16	0 to 95
834620	1/2-3/4	16	0 to 95



* Excluding freezing


SOCKET FEMALE-FEMALE

Code	Mesure	PN (bar)	Temp. (°C)*
832003	3/8	16	0 to 95
832010	1/2	16	0 to 95
832020	3/4	16	0 to 95
832030	1	16	0 to 95
832040	1 1/4	16	0 to 95
832050	1 1/2	16	0 to 95
832060	2	16	0 to 95


SOCKET FEMALE-FEMALE CHROME PLATED

Code	Mesure	PN (bar)	Temp. (°C)*
832110	1/2	16	0 to 95


REDUCING SOCKET FEMALE-FEMALE

Code	Mesure	PN (bar)	Temp. (°C)*
832503	1/4-3/8	16	0 to 95
832504	1/4-1/2	16	0 to 95
832505	3/8-1/2	16	0 to 95
832507	1/4-3/4	16	0 to 95
832508	3/8-3/4	16	0 to 95
832510	1/2-3/4	16	0 to 95
832520	1/2-1	16	0 to 95
832525	3/4-1	16	0 to 95
832540	3/4-1 1/4	16	0 to 95
832545	1-1 1/4	16	0 to 95
832555	1 1/4-1 1/2	16	0 to 95
832570	1 1/2-2	16	0 to 95



* Excluding freezing


REDUCING SOCKET FEMALE-FEMALE CHROME PLATED

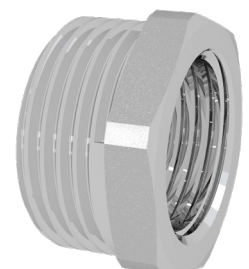
Code	Mesure	PN (bar)	Temp. (°C)*
832605	3/8-1/2	16	0 to 95
832610	1/2-3/4	16	0 to 95


REDUCING HEXAGONAL BUSH MALE-FEMALE

Code	Mesure	PN (bar)	Temp. (°C)*
833000	1/4M-1/8H	16	0 to 95
833003	3/8M-1/8H	16	0 to 95
833001	3/8M-1/4H	16	0 to 95
833004	1/2M-1/8H	16	0 to 95
833002	1/2M-1/4H	16	0 to 95
833005	1/2M-3/8H	16	0 to 95
833008	3/4M-3/8H	16	0 to 95
833010	3/4M-1/2H	16	0 to 95
833028	1M-3/8H	16	0 to 95
833020	1M-1/2H	16	0 to 95
833030	1M-3/4H	16	0 to 95
833035	1 1/4M-1/2H	16	0 to 95
833040	1 1/4M-3/4H	16	0 to 95
833045	1 1/4M-1H	16	0 to 95
833050	1 1/2M-1H	16	0 to 95
833055	1 1/2M-1 1/4H	16	0 to 95
833065	2M-1 1/4H	16	0 to 95
833067	2M-1 1/2H	16	0 to 95


REDUCING HEXAGONAL BUSH MALE-FEMALE CHROME PLATED

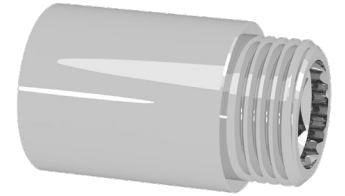
Code	Mesure	PN (bar)	Temp. (°C)*
833105	1/2M-3/8H	16	0 to 95
833110	3/4M-1/2H	16	0 to 95
833130	1M-3/4H	16	0 to 95



* Excluding freezing


EXTENSION MALE-FEMALE CHROME PLATED

Code	Mesure	PN (bar)	Temp. (°C)*
830610	1/2 L10	16	0 to 95
830615	1/2 L15	16	0 to 95
830620	1/2 L20	16	0 to 95
830625	1/2 L25	16	0 to 95
830630	1/2 L30	16	0 to 95
830640	1/2 L40	16	0 to 95
830650	1/2 L50	16	0 to 95
830660	1/2 L60	16	0 to 95
830680	1/2 L80	16	0 to 95
830699	1/2 L100	16	0 to 95


EXTENSION MALE-FEMALE

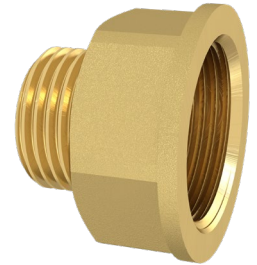
Code	Mesure	PN (bar)	Temp. (°C)*
830710	1/2 L10	16	0 to 95
830715	1/2 L15	16	0 to 95
830720	1/2 L20	16	0 to 95
830725	1/2 L25	16	0 to 95
830730	1/2 L30	16	0 to 95
830740	1/2 L40	16	0 to 95
830750	1/2 L50	16	0 to 95
830760	1/2 L60	16	0 to 95
830780	1/2 L80	16	0 to 95
830799	1/2 L100	16	0 to 95



* Excluding freezing


REDUCING SOCKET MALE-FEMALE

Code	Mesure	PN (bar)	Temp. (°C)*
833510	1/2H-3/8M	16	0 to 95
833522	3/4H-3/8M	16	0 to 95
833525	3/4H-1/2M	16	0 to 95
833530	1H-1/2M	16	0 to 95
833535	1H-3/4M	16	0 to 95
833540	1 1/4H-3/4M	16	0 to 95
833545	1 1/4H-1M	16	0 to 95
833550	1 1/2H-1M	16	0 to 95
833555	1 1/2H-1 1/4M	16	0 to 95
833560	2H-1 1/4M	16	0 to 95
833565	2H-1 1/2M	16	0 to 95


REDUCING SOCKET MALE-FEMALE CHROME PLATED

Code	Mesure	PN (bar)	Temp. (°C)*
833610	1/2H-3/8M	16	0 to 95
833625	1/H-3/4M	16	0 to 95


HEXAGONAL BUSH FEMALE-MALE

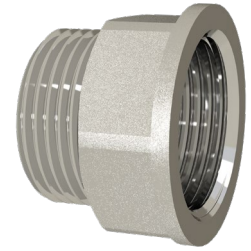
Code	Mesure	PN (bar)	Temp. (°C)*
831504	1/4	16	0 to 95
831505	3/8	16	0 to 95
831510	1/2	16	0 to 95
831520	3/4	16	0 to 95
831530	1	16	0 to 95
831540	1 1/4	16	0 to 95
831550	1 1/2	16	0 to 95
831555	2	16	0 to 95



* Excluding freezing


HEXAGONAL BUSH FEMALE-MALE CHROME PLATED

Code	Mesure	PN (bar)	Temp. (°C)*
831605	3/8	16	0 to 95
831610	1/2	16	0 to 95


REDUCING SOCKET MALE-FEMALE INNER HEXAGON

Code	Mesure	PN (bar)	Temp. (°C)*
839510	1/2M-3/8H	16	0 to 95
839525	3/4M-1/2H	16	0 to 95
839530	1M-3/4H	16	0 to 95
839535	1 1/4M-1H	16	0 to 95


REDUCING SOCKET MALE-FEMALE INNER HEXAGON CHROME PLATED

Code	Mesure	PN (bar)	Temp. (°C)*
839610	1/2M-3/8H	16	0 to 95
839625	3/4M-1/2H	16	0 to 95


ELBOW FEMALLE-FEMALLE

Code	Mesure	PN (bar)	Temp. (°C)*
835003	1/4	16	0 to 95
835005	3/8	16	0 to 95
835010	1/2	16	0 to 95
835020	3/4	16	0 to 95
835030	1	16	0 to 95
835040	1 1/4	16	0 to 95
835050	1 1/2	16	0 to 95
835060	2	16	0 to 95


ELBOW FEMALLE-FEMALLE CHROME PLATED

Code	Mesure	PN (bar)	Temp. (°C)*
835110	1/2	16	0 to 95
835120	3/4	16	0 to 95



* Excluding freezing


ELBOW MALE-FEMALE

Code	Mesure	PN (bar)	Temp. (°C)*
836000	1/8	16	0 to 95
836003	1/4	16	0 to 95
836005	3/8	16	0 to 95
836010	1/2	16	0 to 95
836020	3/4	16	0 to 95
836030	1	16	0 to 95
836040	1 1/4	16	0 to 95
836050	1 1/2	16	0 to 95
836060	2	16	0 to 95


ELBOW MALE-FEMALE CHROME PLATED

Code	Mesure	PN (bar)	Temp. (°C)*
836110	1/2	16	0 to 95


ELBOW MALE-MALE

Code	Mesure	PN (bar)	Temp. (°C)*
835505	3/8	16	0 to 95
835510	1/2	16	0 to 95
835520	3/4	16	0 to 95
835530	1	16	0 to 95
835540	1 1/4	16	0 to 95
835550	1 1/2	16	0 to 95
835560	2	16	0 to 95


ELBOW MALE-MALE CHROME PLATED

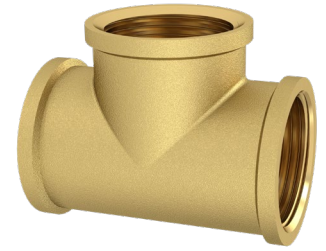
Code	Mesure	PN (bar)	Temp. (°C)*
835620	3/4	16	0 to 95



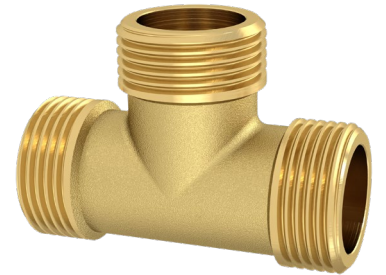
* Excluding freezing


EQUAL TEE FEMALE-FEMALE-FEMALE

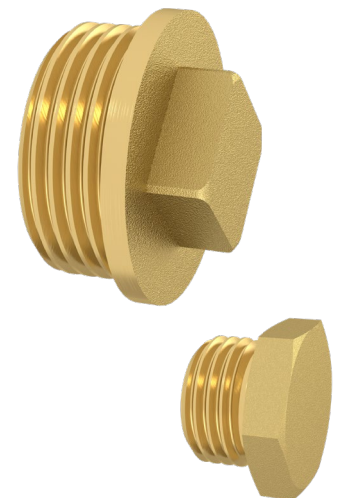
Code	Mesure	PN (bar)	Temp. (°C)*
830505	3/8	16	0 to 95
830510	1/2	16	0 to 95
830520	3/4	16	0 to 95
830530	1	16	0 to 95
830540	1 1/4	16	0 to 95
830550	1 1/2	16	0 to 95
830560	2	16	0 to 95


EQUAL TEE MALE-MALE-MALE

Code	Mesure	PN (bar)	Temp. (°C)*
830305	3/8	16	0 to 95
830310	1/2	16	0 to 95
830320	3/4	16	0 to 95
830330	1	16	0 to 95
830340	1 1/4	16	0 to 95


MALE CAP

Code	Mesure	PN (bar)	Temp. (°C)*
830203(*)	1/4	16	0 to 95
830205	3/8	16	0 to 95
830210	1/2	16	0 to 95
830220	3/4	16	0 to 95
830230	1	16	0 to 95
830240	1 1/4	16	0 to 95
830250	1 1/2	16	0 to 95
830260	2	16	0 to 95



(*)830203

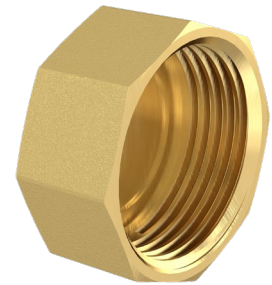
* Excluding freezing



FEMALE CAP

Code	Mesure	PN (bar)	Temp. (°C)*
830000	1/4	16	0 to 95
830005	3/8	16	0 to 95
830010	1/2	16	0 to 95
830020	3/4	16	0 to 95
830030	1	16	0 to 95
830040	1 1/4	16	0 to 95
830050	1 1/2	16	0 to 95
830060	2	16	0 to 95

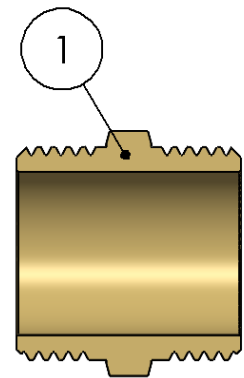
* Excluding freezing



MATERIAL

Item	Component	Material	Finishing
1	Body	CW617N Brass	Brass Colour*

* Variable components according to model.



Compatibility with fluids

Fluid	Compatibility
Drinking water and domestic hot water	Excelent

For any other fluid, please contact Arco technical Service

INSTALLATION INSTRUCTIONS

Before carrying out any action, the water supply to the installation must be cut off. Make sure that there is no dirt or foreign matter in the connection to the mains. Apply the appropriate sealing material to the threads. Installation must be carried out with a suitable tool, preferably with a wrench to hold the accessory.

Restore the water supply and check the tightness of all connections before putting the installation into service.



All products have an enviromental impact during its life cicle, even once retired. All the components of this product can be recycled. Once the use is over, leave the valve in any recycling green point. Válvulas Arco reserves the right to change the product or any of its technical specifications without prior notice.

FT80010ING – Edition 2024-12