



## TAJO PRO VITAQ

Ball valves with dynamic dual stem actuation system for plumbing installations where the connection is made by means of a thread or flange.

- **VITAQ SYSTEM**, more life, less lime at higher temperatures.
- Dynamic dual stem, more resistant, double reliability.
- European Brass, DW (4MS) quality for use in drinking water installations.
- 100% valves are tested for inner leakage.
- Without reducing flow.
- Strong construction and safe installations.



## TECHNICAL SHEET TAJO PRO VITAQ VALVE

### PRODUCT DESCRIPTION

Ball valves with manual operation that includes the VITAQ SYSTEM, to reduce the limescale effects, with patented dynamic dual stem actuation system.

The incorporation of the VITAQ system and the dynamic dual stem actuation, increases the operating reliability of this type of ball valves, without the disadvantages of the other types of valves that do not allow the free passage of fluid through them, causing greater pressure losses.

### PRODUCT SCOPE

Specially designed for heating, DHW or mixed installations, as well as distribution networks and drinking water connections.

It is recommended for use in installations from DN50, where a valve is required that can shut off the supply without any type of limitation due to limescale or low frequency of maneuvers, in the event of maintenance or emergency situations due to faults in the distribution systems.

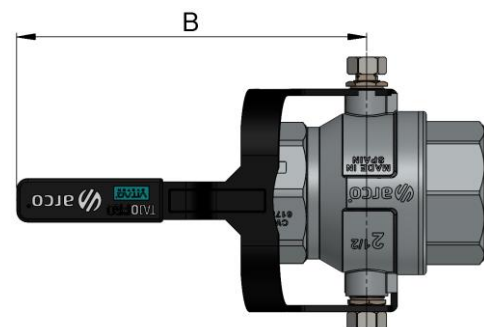
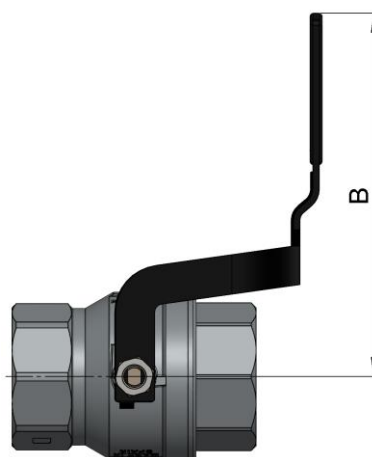
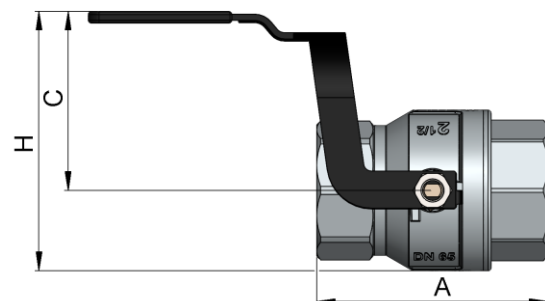
### GENERAL DIMENSIONS, PRESSURE AND TEMPERATURE

#### FEMALE – FEMALE LEVER BLACK COVER

Code	Size	A (mm)	B (mm)	C (mm)	H (mm)	PN (BAR)	Temp. (°C)*
01035AC	2 F-F	126	205	96	138	40	-20 to 140
01036AC	2 1/2 F-F	150	224	116	168	40	-20 to 140
01038AC	3 F-F	164	257	102	167	30	-20 to 140

Threading according to ISO228

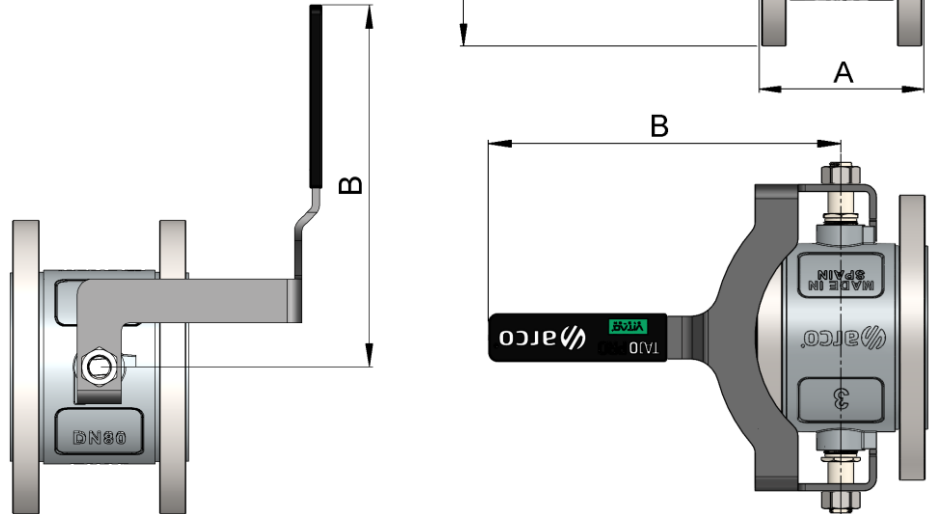
\* Freezing is excluded.




**FLANGED CONNECTION**

Code	Size	A (mm)	B (mm)	C (mm)	H (mm)	PN (BAR)	Temp. (°C)*
01040AC	3 BRIDA	122	247	152	252	16	-20 to 140
01042AC	4 BRIDA	141	262	170	280	16	-20 to 140

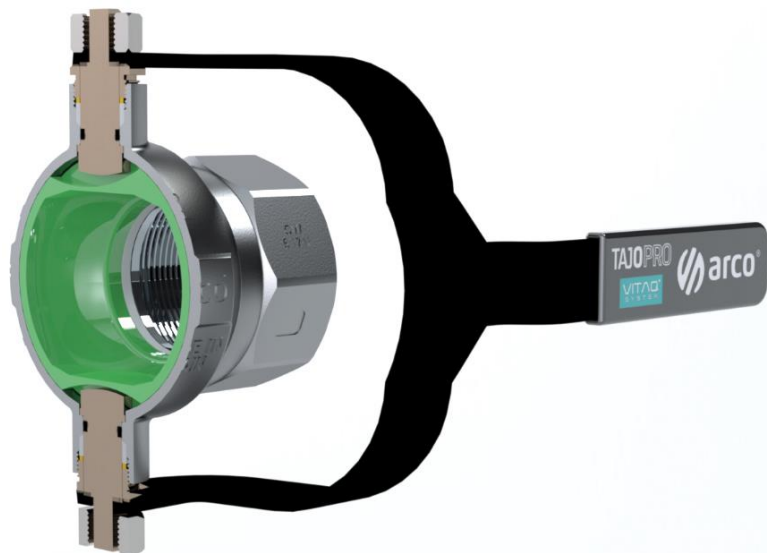
\* Freezing is excluded.


**ACTUATION SYSTEM**

TAJO PRO VITAO it has a dynamic dual stem actuation system, characterized by:

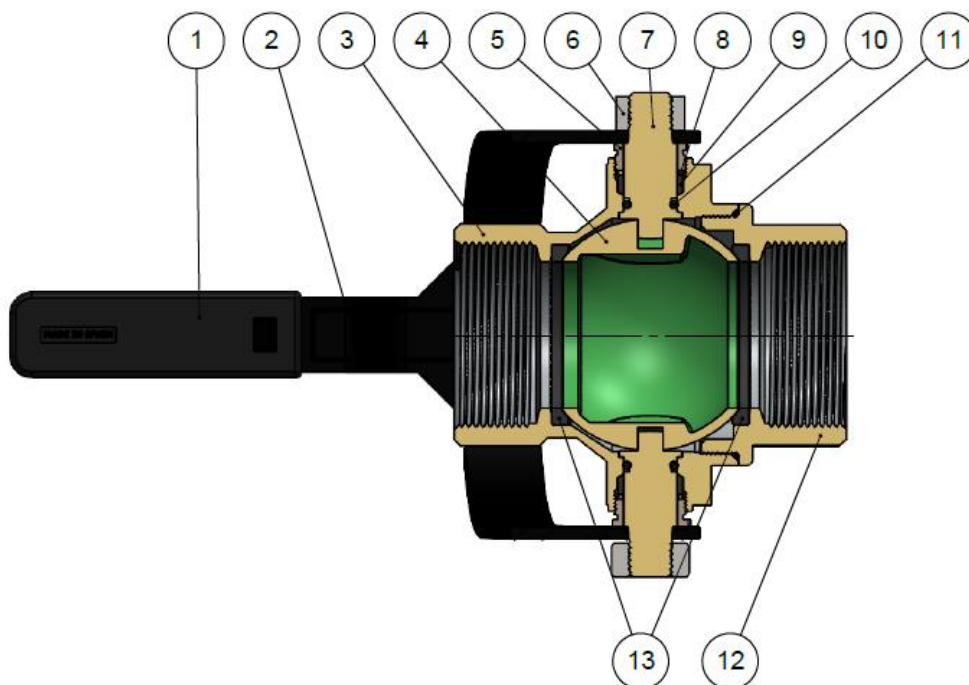
- Long term balancing of the ball.
- Continuous stem alignment.
- Distribution of the effort between the poles of the ball.

This configuration duplicates the maximum allowable torque safety coefficient of the traditional ball valves. The handle works simultaneously on the two stems, being aligned with the valve passage axis in the open position.



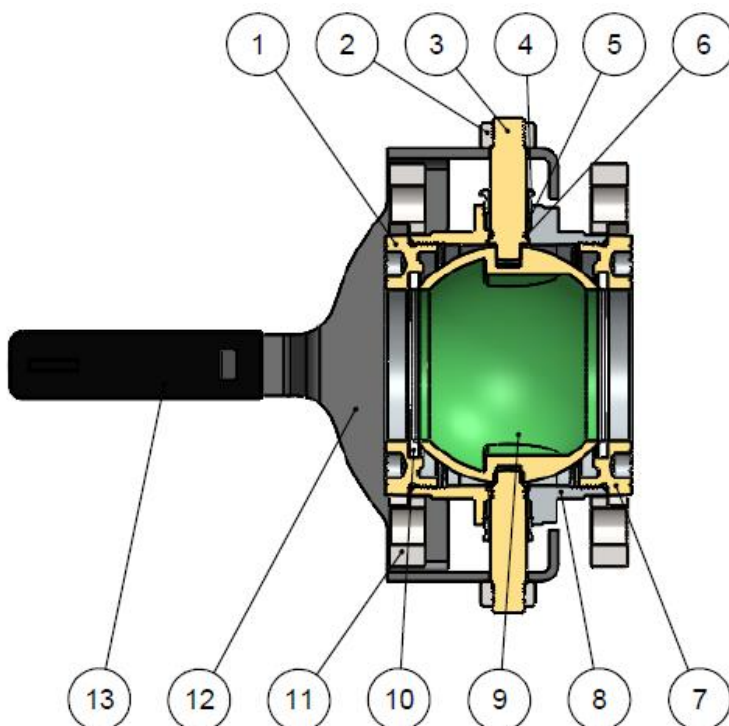

**MATERIALS**

Item	Component	Material	Finishing
1	Cover	LPDE	Black
2	Handle	Steel	Black Epoxy
3	Body	Brass CW617N	Chrome plated
4	Ball	Brass CW608N	VITAQ
5	Gland nut	Brass CW614N	Zinc plated
6	Nut	Stainless steel	Stainless steel
7	Stem	Brass CW614N	Zinc plated
8	Washer	Brass CW614N	Brass color
9	Gland	PTFE	-
10	O-ring	NBR	-
11	O-ring	NBR	-
12	Lateral	Brass CW617N	Chrome plated
13	Seat	PTFE	-




**MATERIALS**

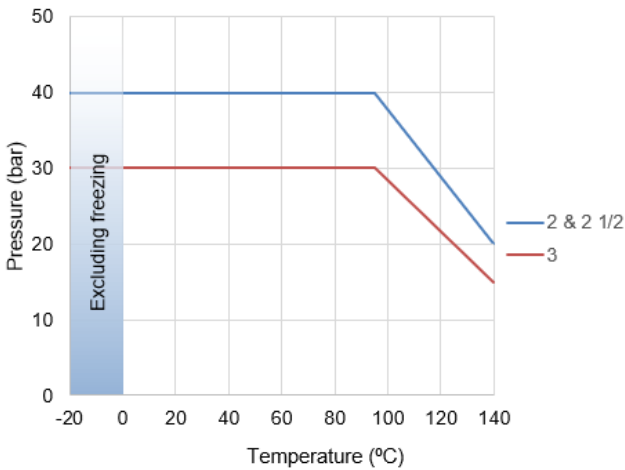
Item	Component	Material	Finishing
1	Lateral	Brass CW617N	Chrome plated
2	Nut	Stainless steel	Stainless steel
3	Stem	Brass CW614N	Zinc plated
4	Gland nut	Brass CW614N	Zinc plated
5	Gland	PTFE	-
6	O-ring	NBR	-
7	O-ring	NBR	-
8	Body	Brass CW617N	Chrome plated
9	Ball	Brass CW608N	VITAQ
10	Seat	PTFE	-
11	Flange	Steel	Zinc plated
12	Handle	Steel	Black Epoxy
13	Cover	LPDE	Black



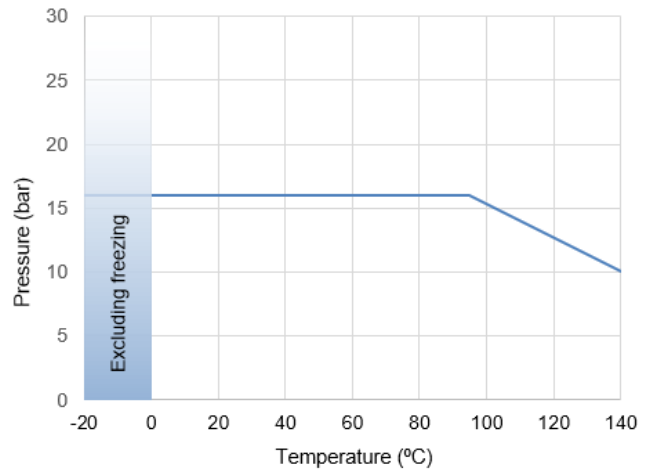


**TECHNICAL DATA**

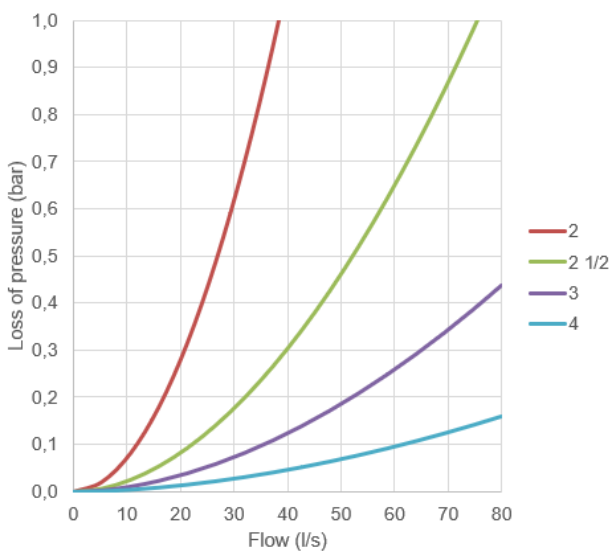
**Pressure vs. temperature. THREAD**



**Pressure vs. temperature. FLANGE**



**Hydraulic features. Flow vs. loss of pressure.**



Size	2	2 1/2	3	4
Kv	138	272	454	810

Kv (m<sup>3</sup>/h), cubic meters per hour that flow through the valve generating a loss of 1 bar pressure.

**Compatibility with fluids**

Fluid	Compatibility
Drinking water and domestic hot water	Excellent
Water + 50% Glycol (maximum)	Good

For any other fluid, please contact Arco technical service.

**INSTALLATION AND OPERATION INSTRUCTIONS**

Before performing any action, the water supply to the installation should be shut off. Make sure there is no dirt or foreign objects in the connection to the network.

On models with threaded connection, apply the appropriate sealing material to the inlet thread of the valve. The valve should be installed with a suitable tool, preferably with a wrench to hold the body. . The tool should act on the flat surfaces of the valve body to avoid deforming this area due to excessive pressure from the tool.

On models with flanged connection, are required for assembly 16 M16 screws and flange joint (not included).

Restore the water supply and check the tightness of all connections before fixing the valve to service. Do not alter the assembly of the valve components; replacement or disassembly of the handle may cause external leaks. Quarter-turn valves should always operate in a fully open position.



All products have an environmental impact during its life cycle, even once retired. All the components of this product can be recycled. Once the use is over, leave the valve in any recycling green point. Válvulas Arco reserves the right to change the product or any of its technical specifications without prior notice.

FT05020ING – Edition 2024-12