



TAP CONNECTORS

Main body made of Cu-DHP (Cu > 99.90%) and nuts in CW617N brass for connection with copper pipes by means of soldering.

- Cu-DHP Copper – CW402A excellent solderability and corrosion resistance.
- Nuts made of high-strength CW617N brass. Wide range of applications in drinking water and air conditioning.
- Maximum operating temperatures and pressures in accordance with EN 1254-1 Annex A.



TECHNICAL SHEET TAP CONNECTORS

PRODUCT DESCRIPTION

Main body made of Cu-DHP (Cu > 99.90%) and nuts in CW617N brass for connection with copper pipes by means of soldering.

PRODUCT SCOPE

Flared fittings are intended for use in:

- Drinking water and domestic hot water
- Heating Systems
- Cooling Systems

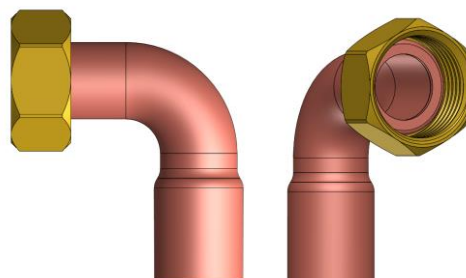
In accordance with the temperature and service pressure conditions described herein.

GENERAL DIMENSIONS, PRESSURE AND TEMPERATURE

FLAT CURVED ELBOW

Code	Size
P4561FR	12 – 1/2 TL
P4562FR	14 – 1/2 TL
P4563FR	15 – 1/2 TL
P4568FR	15 – 3/4 TL
P4564FR	16 – 1/2 TL
P4569FR	16 – 3/4 TL
P4565FR	18 – 1/2 TL
P4570FR	18 – 3/4 TL
P4571FR	22 – 3/4 TL
P4573FR	22 – 1 TL
P4575FR	28 – 1 TL

See conditions of service in the attached table



Maximum operating temperatures and pressures

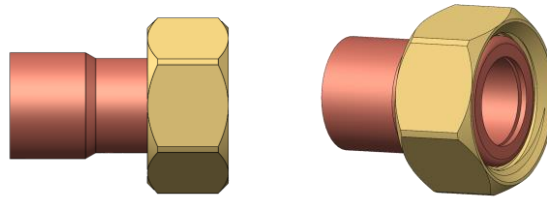
Alloy Welding	Serving temperature(°C)	Maximum operating pressure(BAR)
Welds with a lead content greater than 50%	30	16
	65	10
	110	6
Solder containing 95% or more of tin	30	25
	65	25
	110	16

The joints, not included with the fitting, must be compatible with the operating conditions of the installation.
Excluding freezing



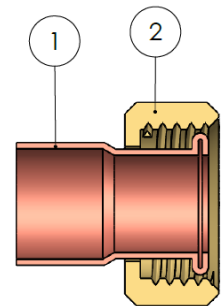
FLAT CUFF

Code	Size
P4520FR	10 – 1/2 TL
P4526FR	12 – 3/8 TL
P4529FR	12 – 1/2 TL
P4527FR	14 – 3/8 TL
P4530FR	14 – 1/2 TL
P4535FR	14 – 3/4 TL
P4531FR	15 – 1/2 TL
P4536FR	15 – 3/4 TL
P4532FR	16 – 1/2 TL
P4537FR	16 – 3/4 TL
P4533FR	18 – 1/2 TL
P4538FR	18 – 3/4 TL
P4534FR	22 – 1/2 TL
P4539FR	22 – 3/4 TL
P4542FR	22 – 1 TL
P4540FR	28 – 3/4 TL
P4543FR	28 – 1 TL
P4544	28 – 1 1/4 TL
P4545	35 – 1 1/4 TL
P4546	42 – 1 1/2 TL
P4547	54 – 2 TL



MATERIALS

Item	Component	Material	Finishing
1	Body	Copper Cu-DHP	-
2	Nut	Brass CW617N	Brass color



Fluid Compatibility

Fluid	Compatibility
Drinking water and domestic hot water	Excellent
Water + 50% Glycol (maximum)	Good

For any other fluid, please contact our technical service.

See conditions of service in the attached table

INSTALLATION AND OPERATION INSTRUCTIONS

Shut off the water supply at the facility before taking any action.

Before proceeding with the assembly of the fitting, the copper tube must be properly prepared, so that it has a straight cut and free of burrs, as well as that the outer part is clean, without traces of grease, oils or other materials and without superficial damage. Make sure that there is no dirt or foreign element inside the tubes. Apply the welding procedure.

Restore the water supply and check the tightness of all connections before leaving the installation in service.



Every product has an environmental impact during its life cycle, even after it has been removed from use. All components of this product can be recycled, deposit the valve at a recycling point or green point once it is finished use. Valves Arco reserves the right to change the product or its technical specifications without prior notice.

FT80020ING – Edition2024-12